

TWF TIEFBAUTECHNIK

Sales | Rental | Leasing



SHORING LADDER

www.twf-tiefbautechnik.de

www.twf.at

OPERATING MANUAL

03-2024

► Shoring ladder

TECHNICAL DETAILS:

Standard version:	4.00 m (incl. 1 extension piece)
Maximum length:	10.00 m (7 extension pieces)
Ladder weight (4.00 m)	205 kg
Weight per extension piece (1.00 m)	35 kg

1. INSTALLING EXTENSION PIECES



In its standard version, the length of the shoring ladder is 4.00 m (ladder weight 185 kg)

Please note:

Before installation and use of the shoring ladder, all its parts must be checked with regard to their condition and functioning! Damaged parts must not be used!

- 1 Lower platform
- 2 Extension piece
- 3 Upper platform



The extension pieces are secured using four bolts M12 (SW19, class 8.8) with self-locking nuts.

The length of the shoring ladder can be varied using a screw system. 1.00 m extension pieces (weight per piece: 39 kg) to extend the shoring ladder to 10.00 m max.





► Operating manual

2. PLACING THE SHORING LADDER

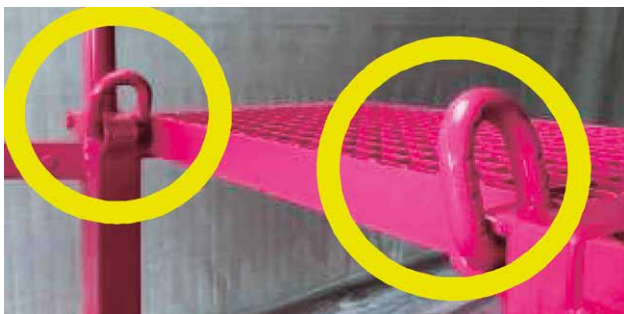


Putting the ladder in place using an excavator. Fall protection must be closed at the edge areas during installation.



Attached shoring ladder.

The ladder must make contact across the entire surface area and lock into place securely.



Two attachment points for lifting chains at the upper platform.

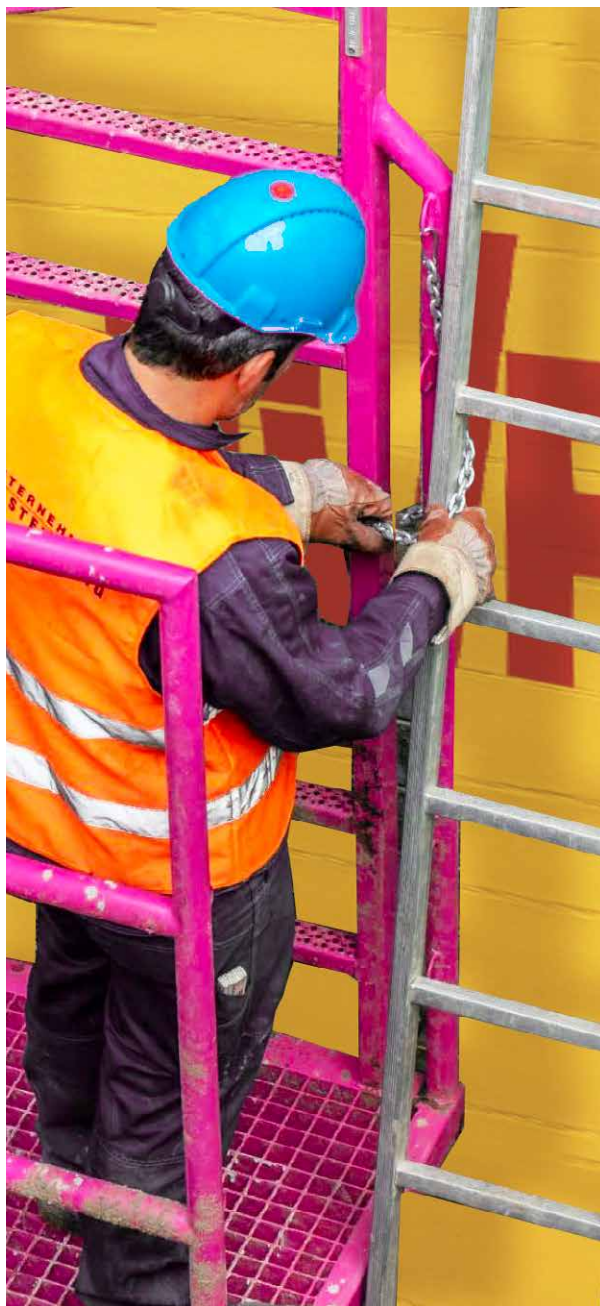


On the lower platform and ideally on every second extension piece of the shoring ladder there are two adjustment screws (SW30) for vertical alignment. The minimum distance between ladder and shoring surface must be 150 mm to ensure that feet can be placed securely on the rungs.



► Shoring ladder

3. SECURING THE LEAN-TO LADDER



The ladder upright must be secured tightly to the side of the shoring ladder using a chain to prevent the ladder from tipping over to the side.



The shoring ladder has five eyelets for attaching the chain carabiner on each side to accommodate different lean-to positions.



► Operating manual

4. CLIMBING DOWN INTO THE TRENCH



For the last section of the descent into the pit a lean-to ladder is used, which can be attached to either side of the lower shoring ladder platform.



Depending on where the ladder is attached to the lower platform, a chain is detached on the right or left side using the carabiner fastening.

Please note:

The remaining distance between the lower platform and the bottom of the trench/pit must be kept to a minimum!

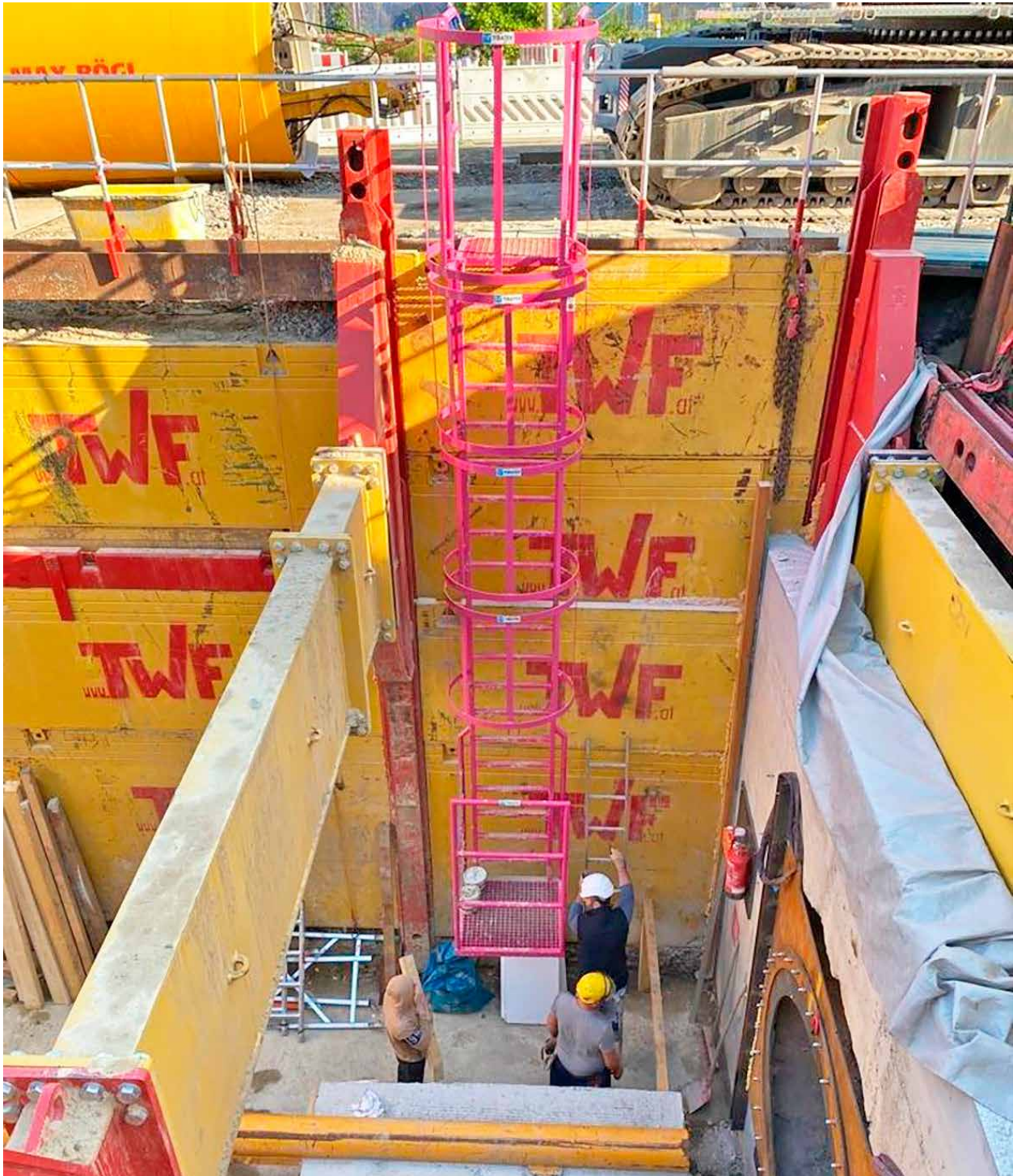
Please note:

After installation of the ladder is complete and before it is used for the first time, it must be **visually inspected** by a **qualified person** (in accordance with TRBS (Technical Rules for Operational Safety) 1203)!



► Shoring ladder

5. FULLY INSTALLED SHORING LADDER





► Operating manual

Please note:

Remove coarse dirt from shoes and boots before climbing down or up the ladder!
To this end, the upper and lower platform surfaces are grated.



Please note:

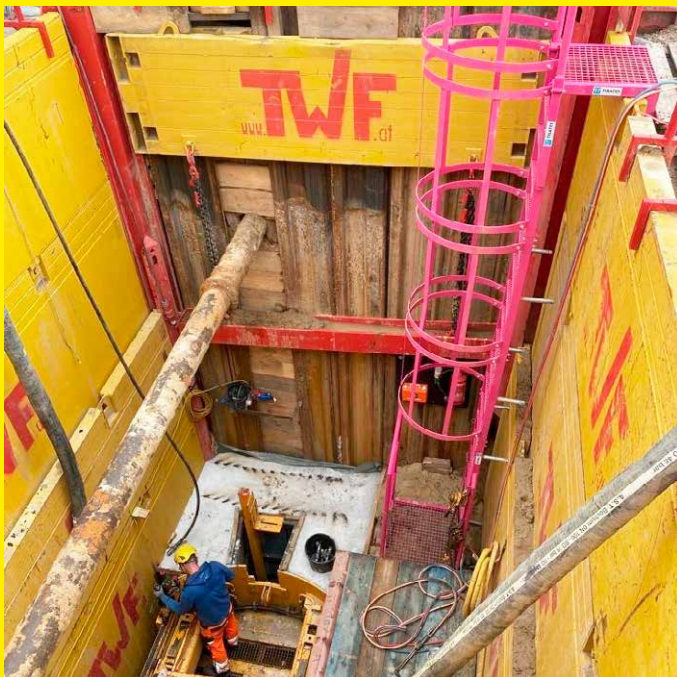
The shoring ladder may only be used by one person at a time!

Regular inspections:

In accordance with the German Regulation on Health and Safety in the Use of Work Equipment, the shoring ladder must be inspected at least **once per year**, or more frequently if required.

TWF TIEFBAUTECHNIK

Sales | Rental | Leasing



SHORING LADDER

TWF Tiefbautechnik GmbH

Düsseldorfer Straße 2, D-52525 Heinsberg

T: +49 2452 15678-0

F: +49 2452 15678-19

office@twf-tiefbautechnik.de

www.twf-tiefbautechnik.de

TWF International GmbH

Klingerstraße 8, A-1230 Wien

T: +43 1 8653333

F: +43 1 8653333-33

office@twf.at

www.twf.at

OPERATING MANUAL